

# PATIENT MONITOR ACCESSORIES



**Adult Finger Clip  
DS100A Style Shell**



**Adult Finger Clip  
UMI Style Shell**



**Adult Soft**



**Paed Finger Clip**



**Paed Finger Clip**



**Paed Soft**

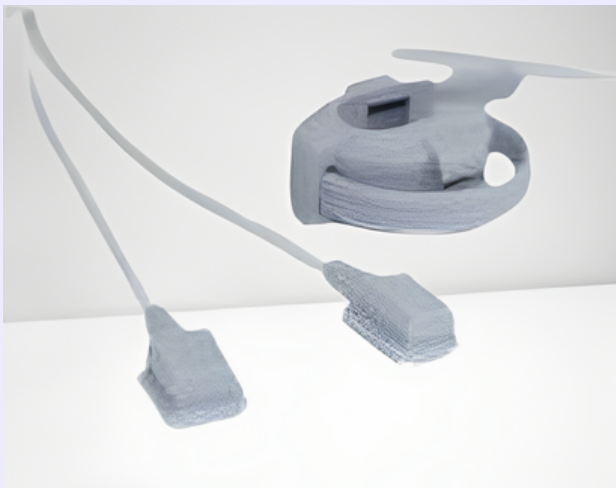




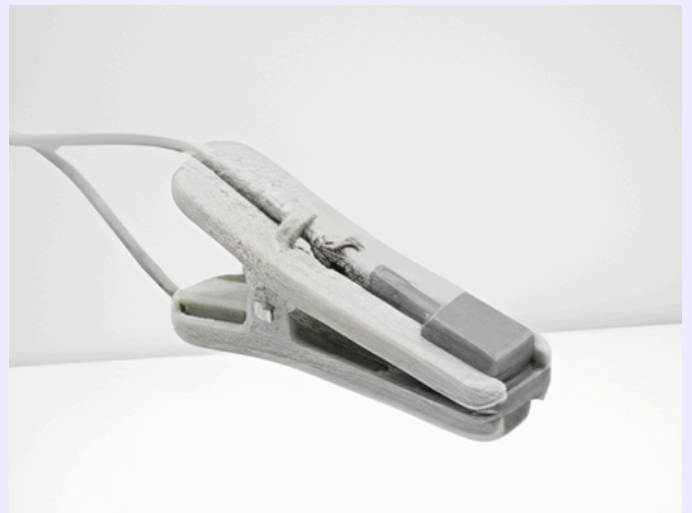
**Paed Soft**



**Neonate wrap**



**Y Wrap**

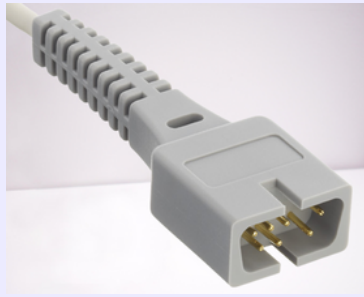


**Ear Clip**





**DB9 Pin Oximax**



**DB7 Pin**



**DOC-10/N595/N600**



**N295**



**GE-Marquette**



**GE-Trusat**



**GE Ohmeda**



**GE Oximax**



**GE Non Oximax**



**GE Trusignal**

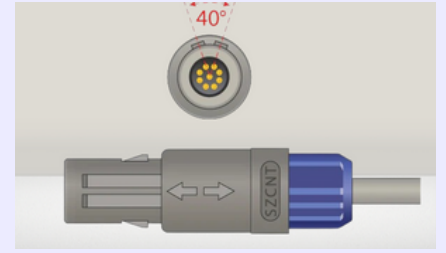




14-Pin



DB 9-Pin



SVM 9-Pin



12-Pin



JL-302T

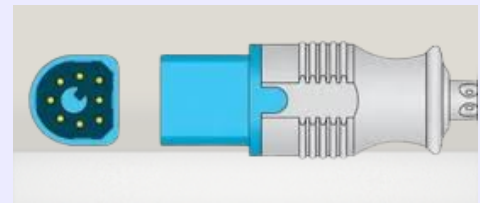
PHILIPS



8Pin



Philips/HP 12Pin

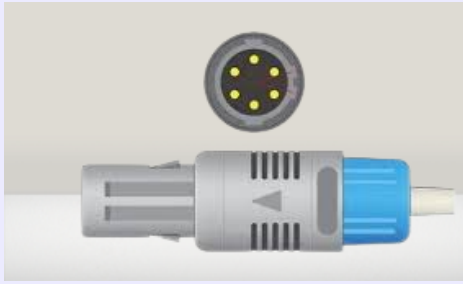


Masimo 8 Pin

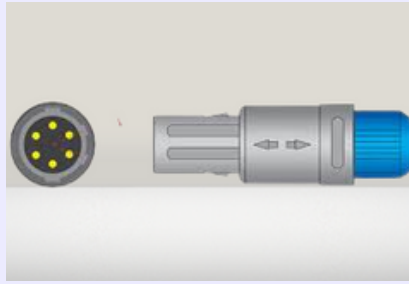


25-Pin Masimo

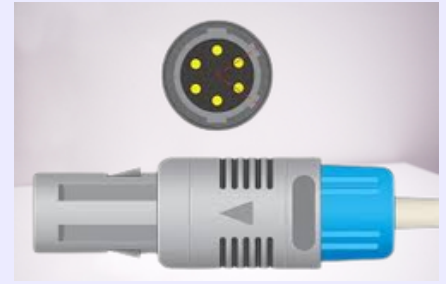




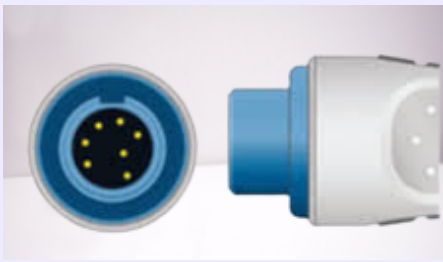
6pin 40deg



6pin 60deg masimo



6pin 80deg oximax



Beneview T5/T8



Masimo



Oximax



Masimo Rainbow



LNCS



14-Pin



LNOP



RD Set

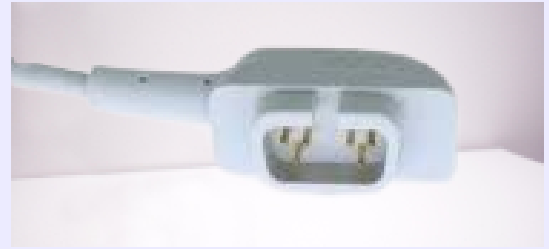


M-LNCS





**5Pin Metal Lemo**



**D 6-PIN**



**7-pin**



**8600**



**M-900**



**Palco RJ12**



**Datex 10-pin**



**14-pin**



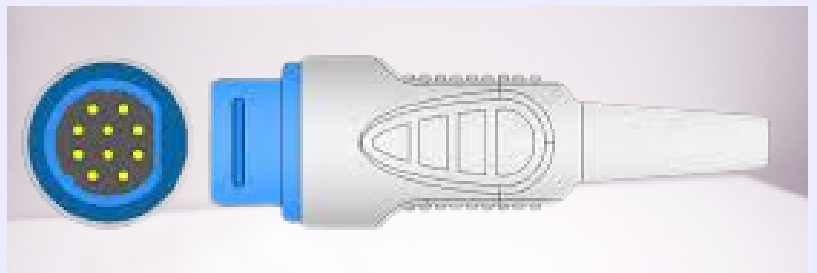
**8-pin**

## **Dräger**



**7-PIN**

## **SIEMENS**

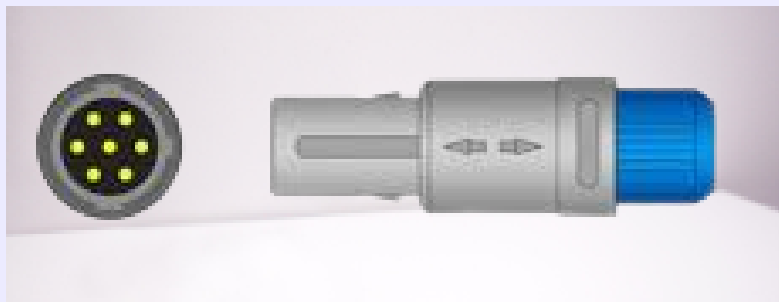


**10 Pin**

## **BCI**



**9-Pin**



**7-Pin 0deg**

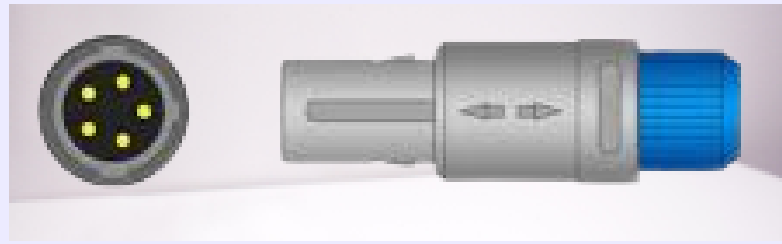


**CONTEC™**

 **MEDICAL POINT**



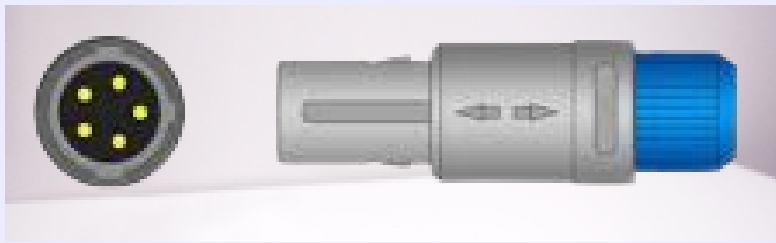
**6-Pin**



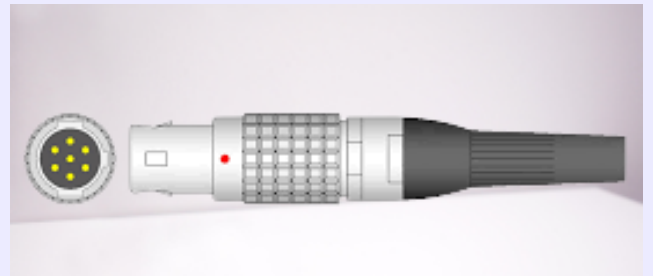
**5-Pin 0Deg**



**invivo®**

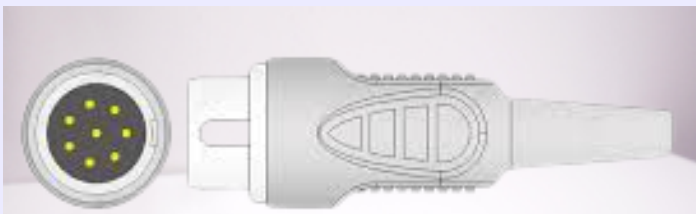


**5-Pin 0Deg**

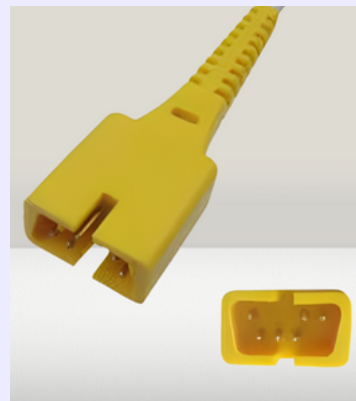


**Metal Lemo 7-pin**

**M.EK**  
*Intensive Care System*



**8-pin**

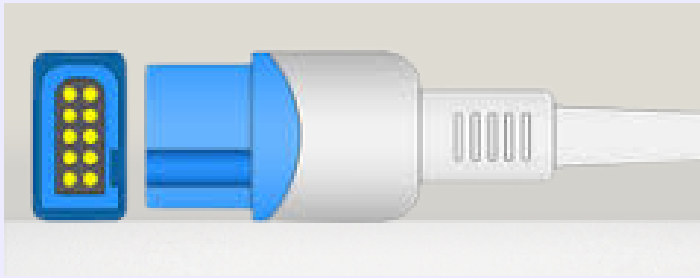


**D 6-Pin**



  
**LIVO PRODUCTS INDIA (P) LTD.**





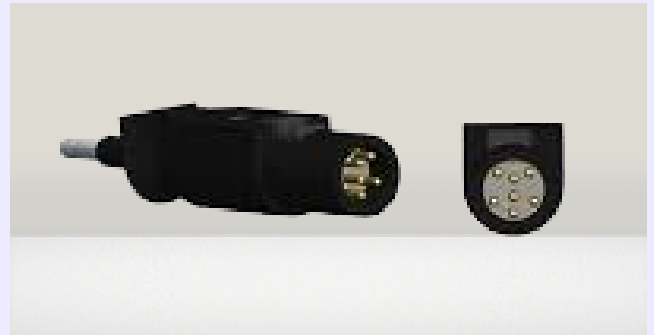
10-Pin



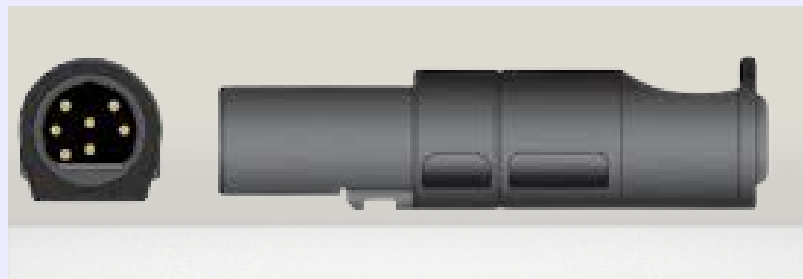
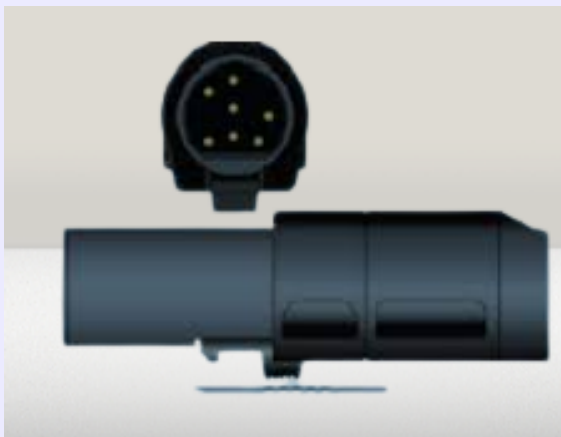
12-Pin



NT2A



7-Pin





**12Pin Digital/Oximax**



**D 9Pin**

